

# FLOOR PLANS

## GROUND FLOOR



## FIRST FLOOR



## SECOND FLOOR



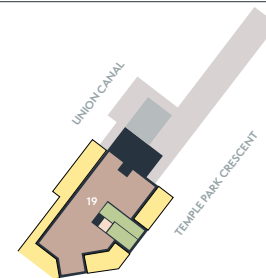
## THIRD FLOOR



## FOURTH FLOOR



## FIFTH FLOOR



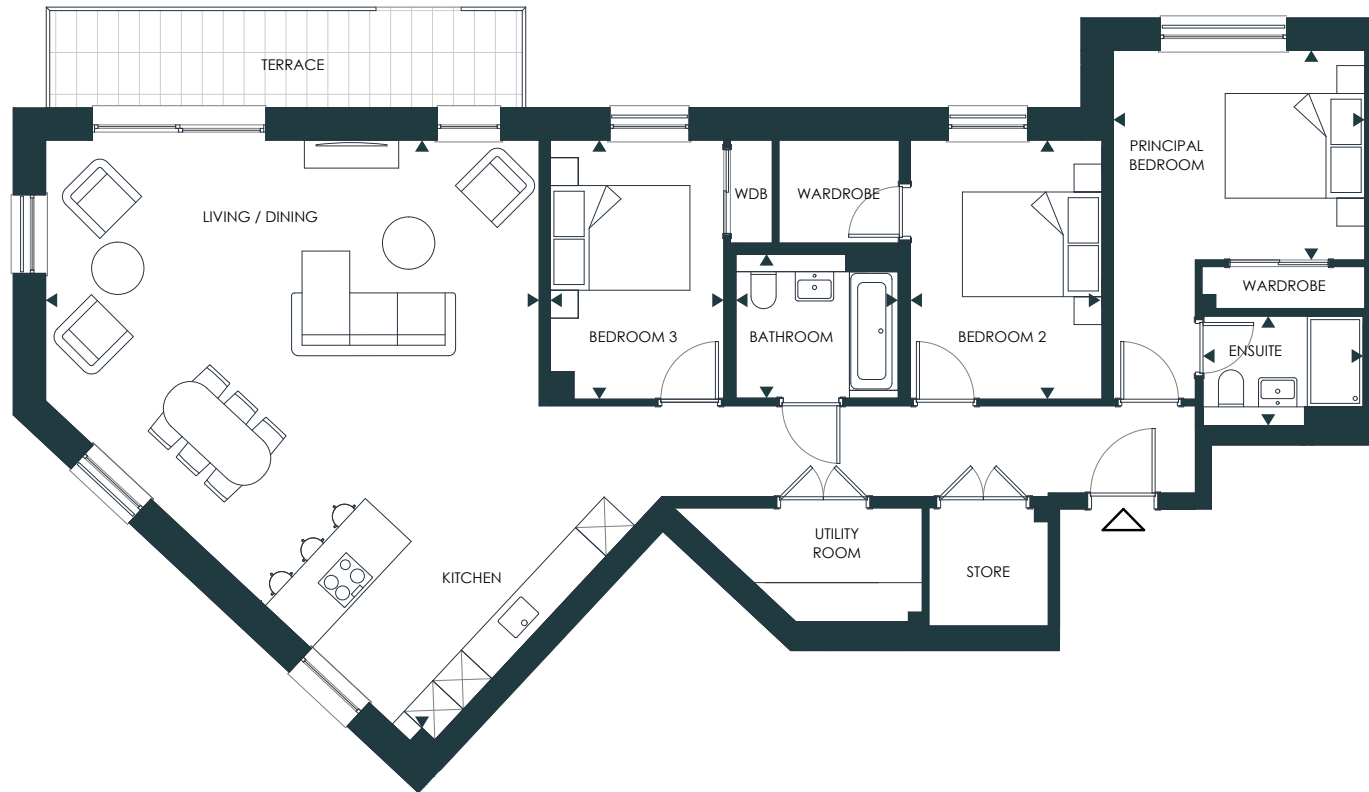
### KEY

- TEMPLE PARK
- PRIVATE RENTAL -SIDEDEVELOPMENTS
- AFFORDABLE MID-MARKET RENTAL
- COMMON STAIR/ LOBBY
- LIFT
- BIKE STORAGE
- BIN STORAGE
- PRIVATE TERRACE, BALCONY OR GARDEN

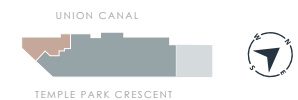


# THREE BEDROOM APARTMENT

PLOT 01 (GROUND FLOOR)

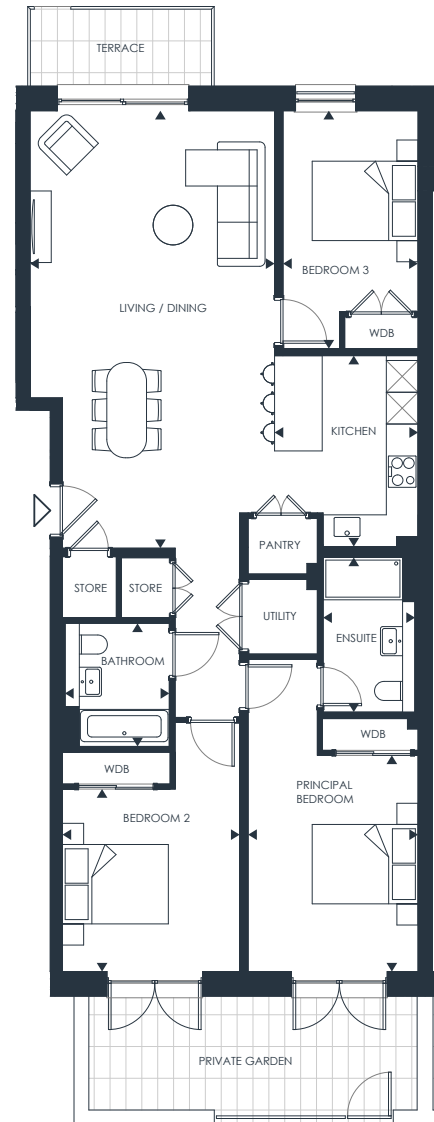


SCHEDULE OF AREAS		
Living/Dining/Kitchen	7.0 x 8.4m	23'0" x 27'7"
Principal Bedroom	3.6 x 3.0m	11'10" x 9'10"
Bedroom 2	2.7 x 3.7m	8'10" x 12'2"
Bedroom 3	2.4 x 3.7m	7'10" x 12'2"
Bathroom	2.3 x 2.0m	7'7" x 6'7"
Ensuite	2.2 x 1.5m	7'3" x 4'11"
<b>G I A</b>	<b>119 sqm</b>	<b>1,280 sqft</b>
Terrace	6.7 x 1.4m	22'0" x 4'7"

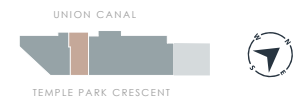




# THREE BEDROOM APARTMENT PLOT 02 (GROUND FLOOR)



SCHEDULE OF AREAS		
Living/Dining	4.6 x 8.2m	15'1" x 26'11"
Kitchen	2.7 x 3.6m	8'10" x 11'10"
Principal Bedroom	3.2 x 4.0m	10'6" x 13'1"
Bedroom 2	3.3 x 3.4m	10'10" x 11'2"
Bedroom 3	2.5 x 3.8m	8'2" x 12'6"
Bathroom	1.9 x 2.3m	6'3" x 7'7"
Ensuite	1.7 x 2.9m	5'7" x 9'6"
<b>G I A</b>	<b>112 sqm</b>	<b>1205 sqft</b>
Terrace	3.5 x 1.4m	11'5" x 4'7"
Private Garden	6.1 x 2.1m	20'0" x 6'10"

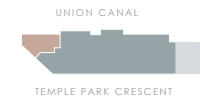




### THREE BEDROOM APARTMENT PLOTS 03, 07, 11 & 15 (1<sup>ST</sup>, 2<sup>ND</sup>, 3<sup>RD</sup> & 4<sup>TH</sup> FLOOR)

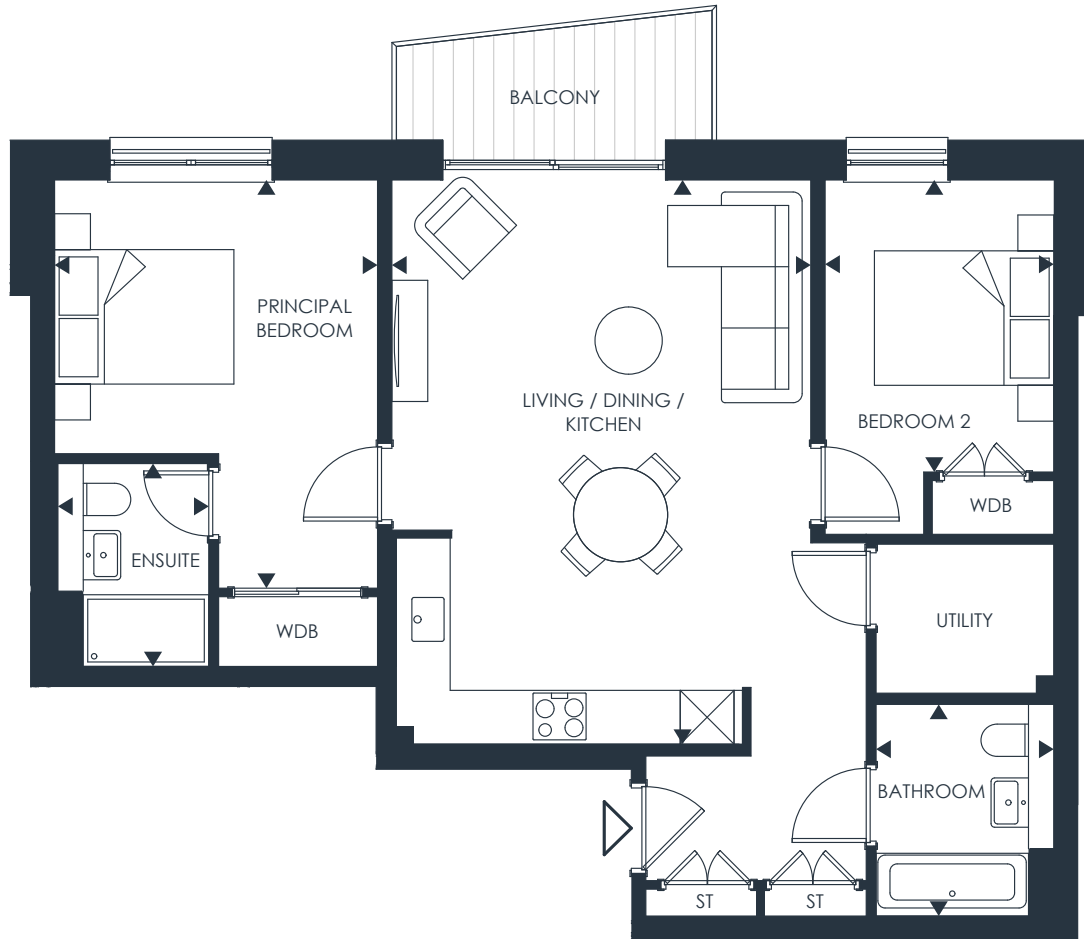


SCHEDULE OF AREAS		
Living/Dining/ Kitchen	5.7 x 6.9m	18'8" x 22'8"
Principal Bedroom	2.7 x 3.2m	8'10" x 10'6"
Bedroom 2	2.5 x 3.5m	8'2" x 11'6"
Bedroom 3	2.8 x 3.4m	9'2" x 11'2"
Bathroom	2.3 x 1.9m	7'7" x 6'3"
Ensuite	2.2 x 1.6m	7'3" x 5'3"
<b>G I A</b>	<b>97 sqm</b>	<b>1,044 sqft</b>
Balcony	5.8 x 5.7 x 1.4m	19'0" x 18'8" x 4'7"

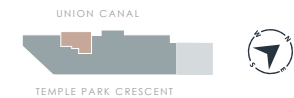




**TWO BEDROOM APARTMENT**  
PLOTS 04, 08 & 12 (1<sup>ST</sup>, 2<sup>ND</sup> & 3<sup>RD</sup> FLOOR)

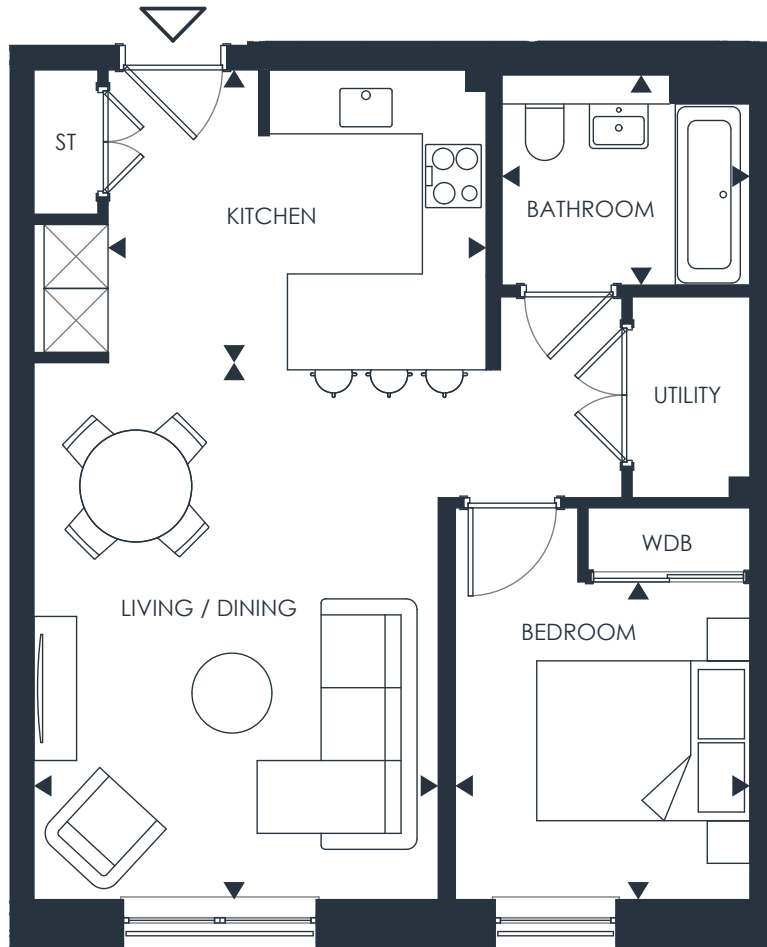


SCHEDULE OF AREAS		
Living/Dining/ Kitchen	4.6 x 6.3m	15'1" x 20'8"
Principal Bedroom	2.9 x 3.4m	9'6" x 11'2"
Bedroom 2	2.5 x 3.1m	8'2" x 10'2"
Bathroom	1.9 x 2.4m	6'3" x 7'10"
Ensuite	2.3 x 1.8m	7'7" x 5'11"
<b>G I A</b>	<b>66.5 sqm</b>	<b>715 sqft</b>
Balcony	3.4m x 1.0-1.4m	11'2" x 3'3"-4'7"

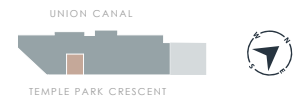




**ONE BEDROOM APARTMENT**  
PLOTS 05, 09, 13 & 17 (1<sup>ST</sup>, 2<sup>ND</sup>, 3<sup>RD</sup> & 4<sup>TH</sup> FLOOR)

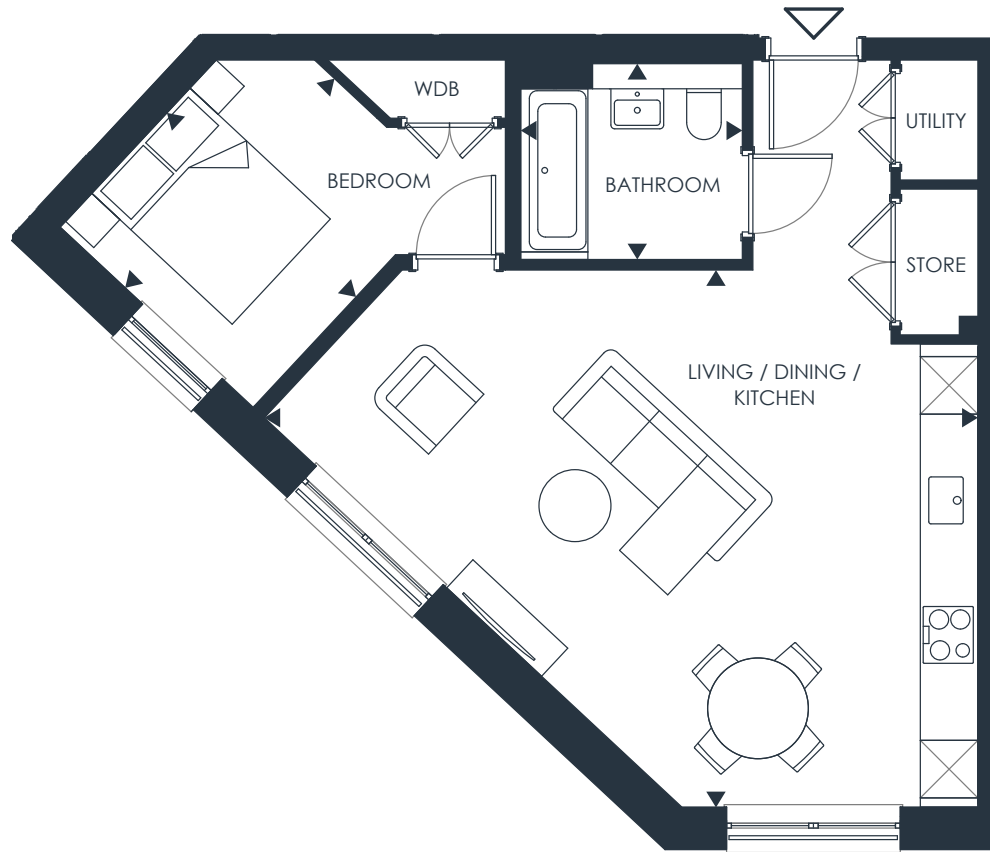


SCHEDULE OF AREAS		
Living/Dining	3.7 x 4.9m	12'2" x 16'1"
Kitchen	2.8 x 3.5m	9'2" x 11'6"
Bedroom	2.7 x 2.9m	8'10" x 9'6"
Bathroom	2.3 x 1.9m	7'7" x 6'3"
<b>G I A</b>	<b>52 sqm</b>	<b>559 sqft</b>

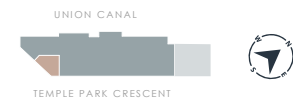




**ONE BEDROOM APARTMENT**  
PLOTS 06, 10, 14 & 18 (1<sup>ST</sup>, 2<sup>ND</sup>, 3<sup>RD</sup> & 4<sup>TH</sup> FLOOR)

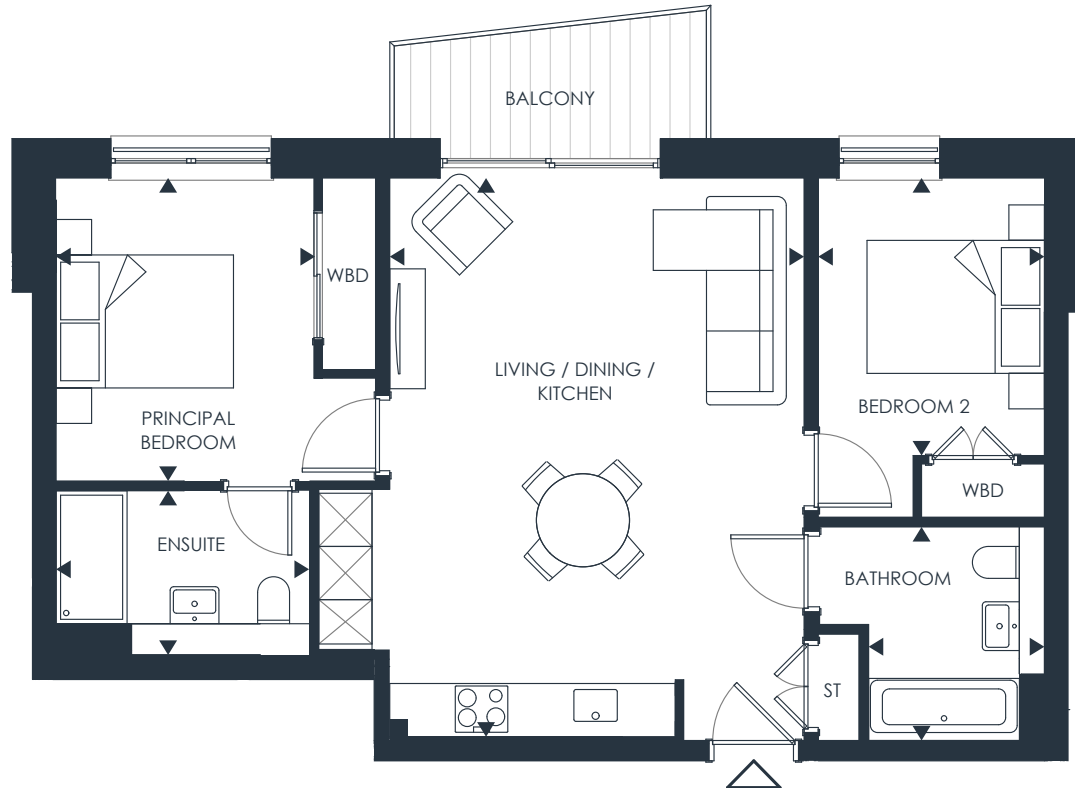


SCHEDULE OF AREAS		
Living/Dining/ Kitchen	7.4 x 5.5m	24'3" x 18'0"
Bedroom	3.0 x 2.7m	9'10" x 8'10"
Bathroom	2.3 x 2.0m	7'7" x 6'7"
<b>G I A</b>	<b>53 sqm</b>	<b>570 sqft</b>

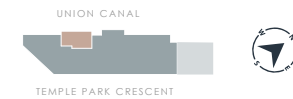




# TWO BEDROOM APARTMENT PLOT 16 (4<sup>TH</sup> FLOOR)



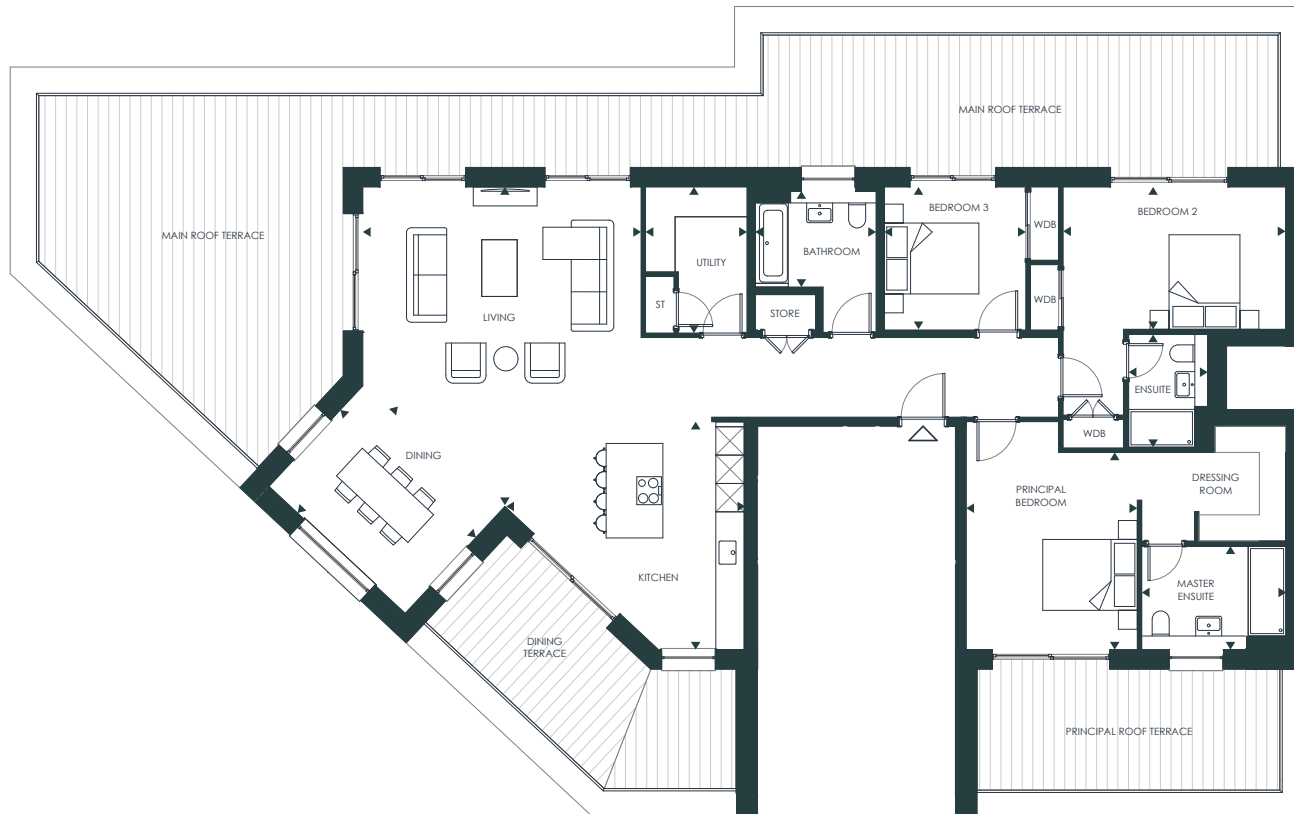
SCHEDULE OF AREAS		
Living/Dining/Kitchen	4.6 x 6.3m	15'1" x 20'8"
Principal Bedroom	2.9 x 3.4m	9'6" x 11'2"
Bedroom 2	2.5 x 3.1m	8'2" x 10'2"
Bathroom	1.9 x 2.4m	6'3" x 7'10"
Ensuite	2.8 x 1.8m	9'2" x 5'11"
<b>G I A</b>	<b>66.5 sqm</b>	<b>715 sqft</b>
Balcony	3.4m x 1.0-1.4m	11'2" x 3'3"-4'7"







**THREE BEDROOM PENTHOUSE**  
PLOT 19 (5<sup>TH</sup> FLOOR)



SCHEDULE OF AREAS		
Living	5.8 x 6.7m	19'0" x 22'0"
Dining	2.9 x 3.9m	9'6" x 12'9"
Kitchen	5.0 x 4.8m	16'5" x 15'9"
Principal Bedroom	3.6 x 4.1m	11'10" x 13'5"
Bedroom 2	4.6 x 2.9m	15'1" x 9'6"
Bedroom 3	2.9 x 3.0m	9'6" x 9'10"
Bathroom	2.5 x 2.0m	8'2" x 6'7"
Principal Ensuite	3.0 x 2.1m	9'10" x 6'11"
Ensuite	1.6 x 2.3m	5'3" x 7'7"
Utility	2.1 x 3.0m	6'11" x 9'10"
<b>G I A</b>	<b>157 sqm</b>	<b>1,690 sqft</b>
Main Roof Terrace	82sqm	882 sq ft
Dining Terrace	17sqm	182 sq ft
Principal Bedroom Terrace	16sqm	172 sq ft

